



This guide takes you step-by-step through the process of setting up a new email account in Outlook 2013.

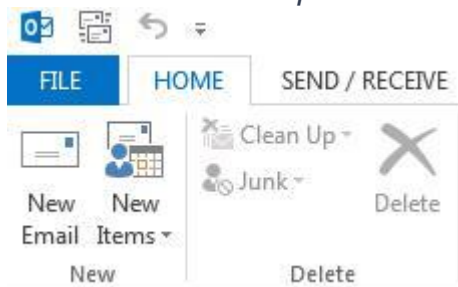
◆ Auto Account Setup (recommended)

New email account set up with Outlook is quick and easy using the **Auto Account Setup** option. However, reasons to rather use **Manual Setup** are:

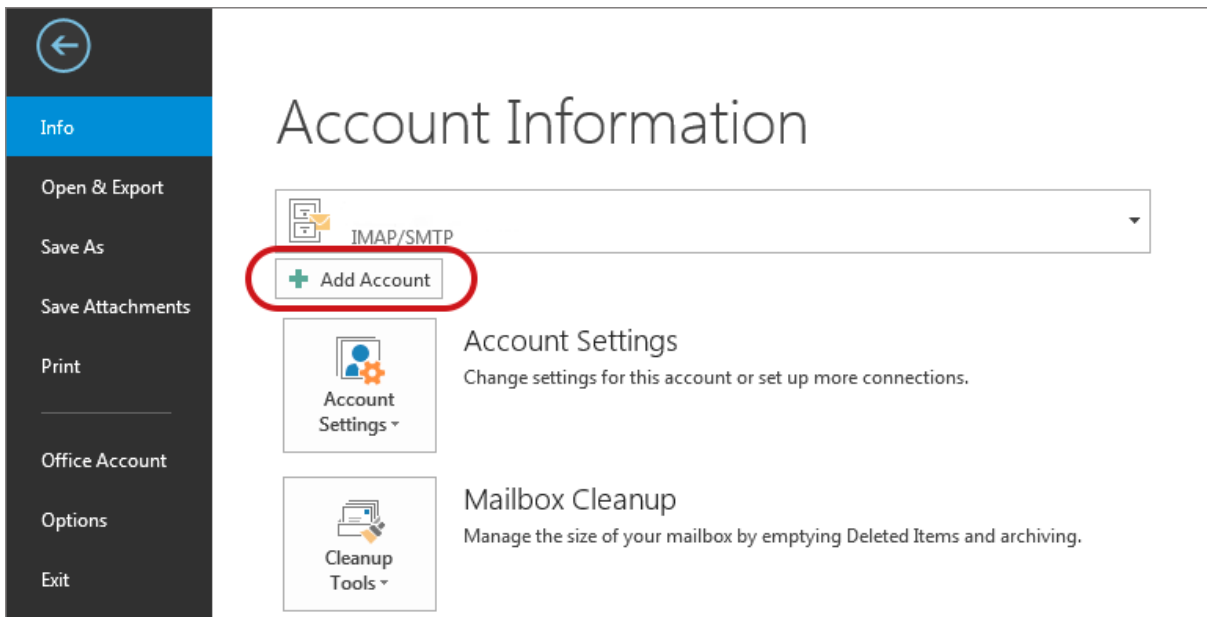
- if you prefer **POP**, as this automatic configuration defaults to **IMAP**

1. Launch **Outlook**

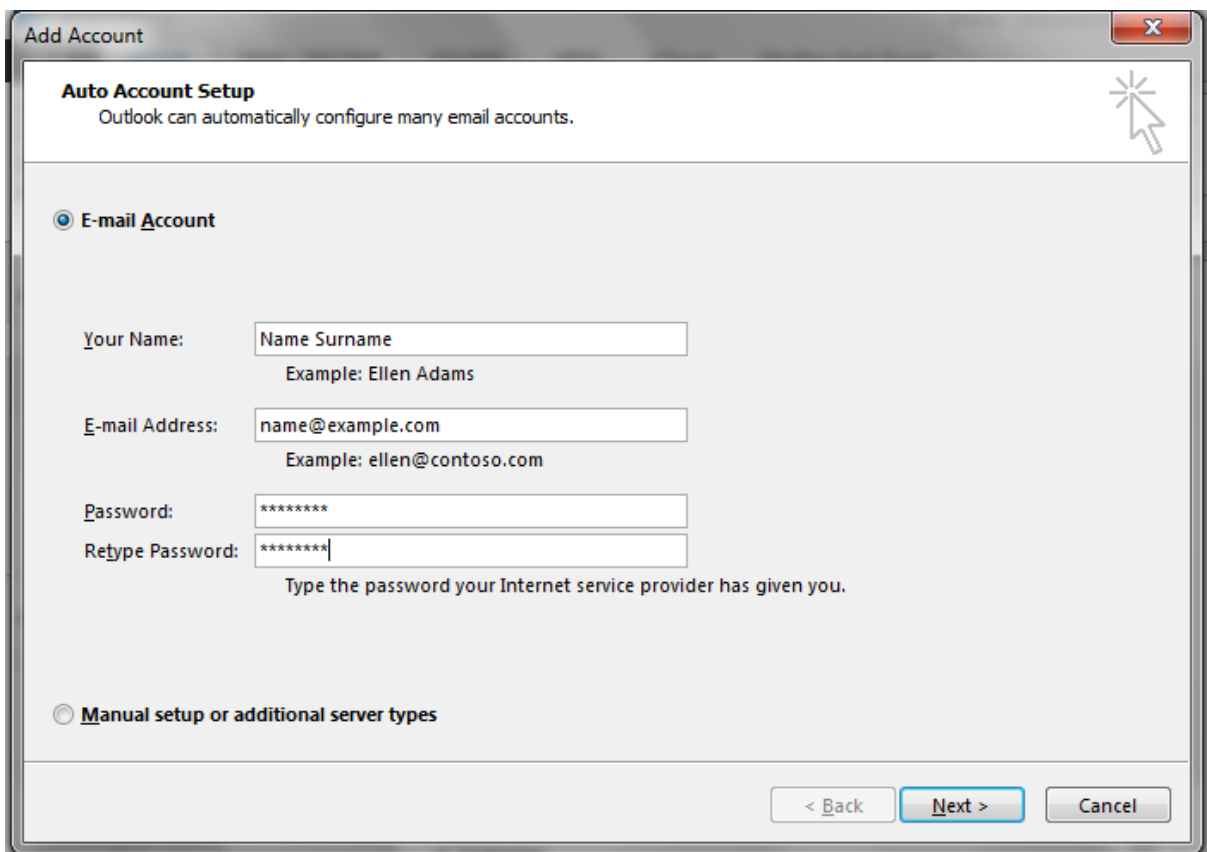
2. Select **File** on the top left menu bar



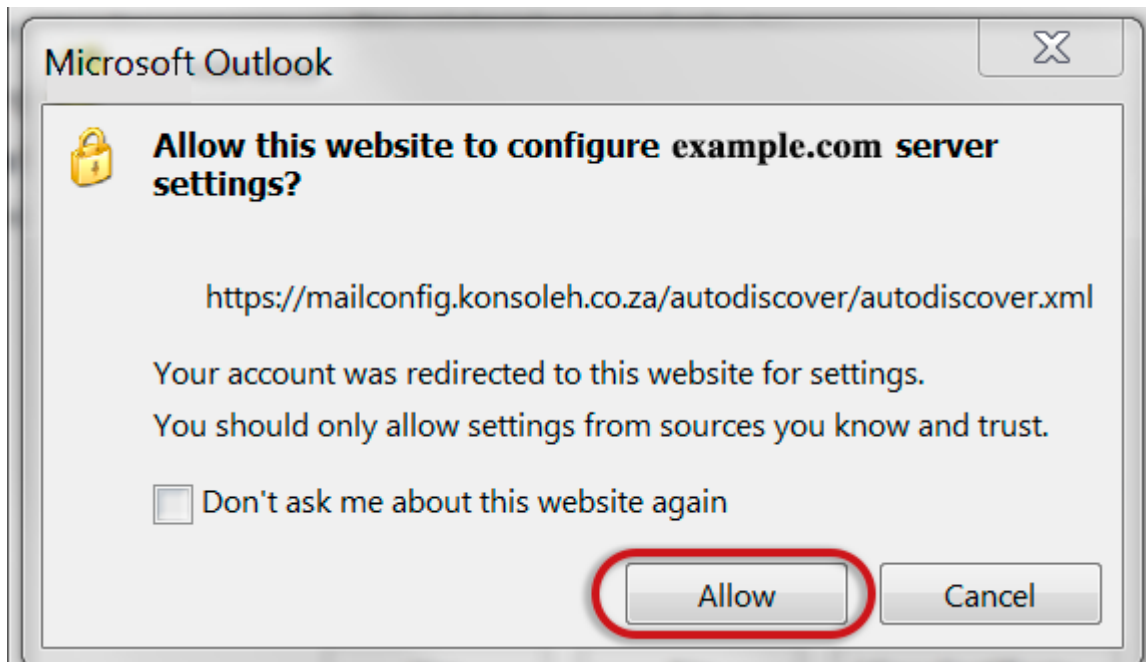
3. Select the **Add Account** button in the middle of the screen



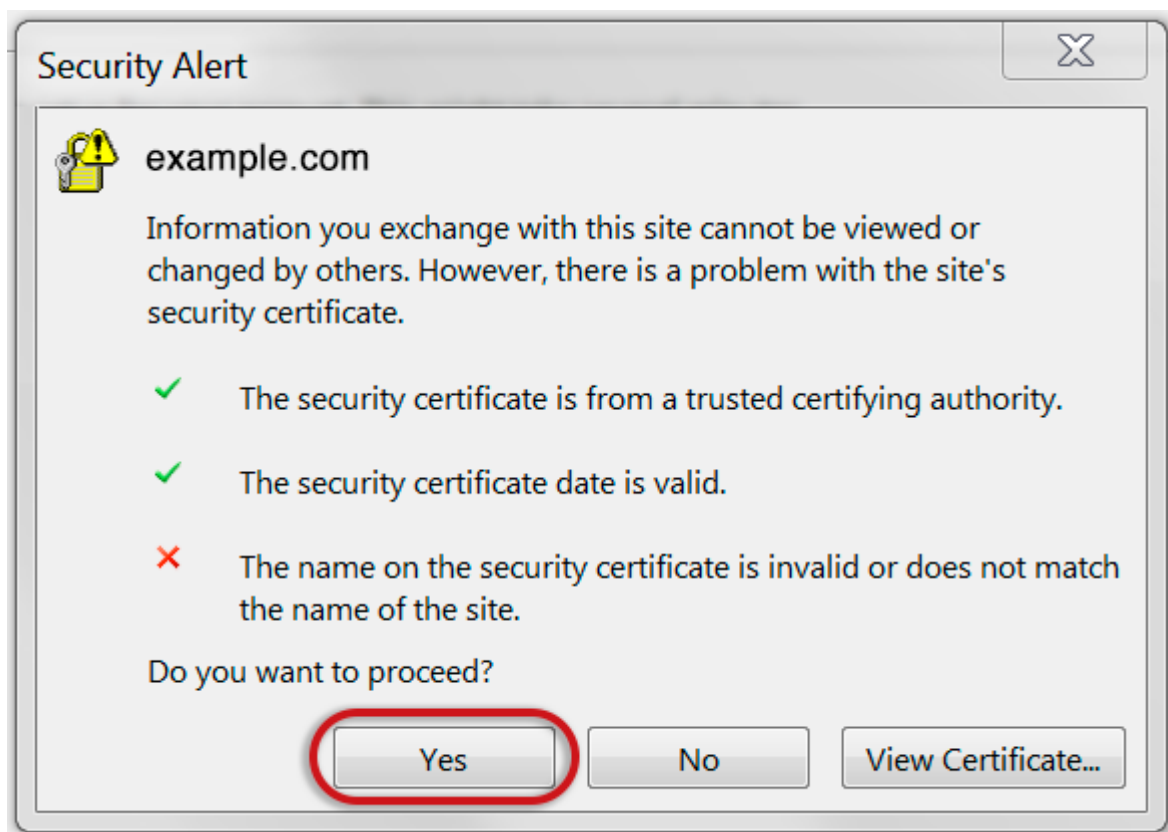
4. Enter your details on the **Auto Account Set-up** screen > **Next**



5. The following warning messages may appear > **Allow**



6. Choose > **Yes**



7. Outlook will now **automatically configure** your account as an IMAP account with **all the correct settings**.

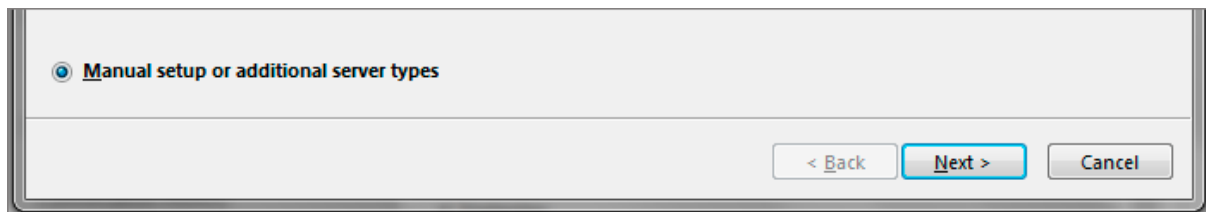
That's it!

If this option fails for some reason, try the Manual Account Setup below

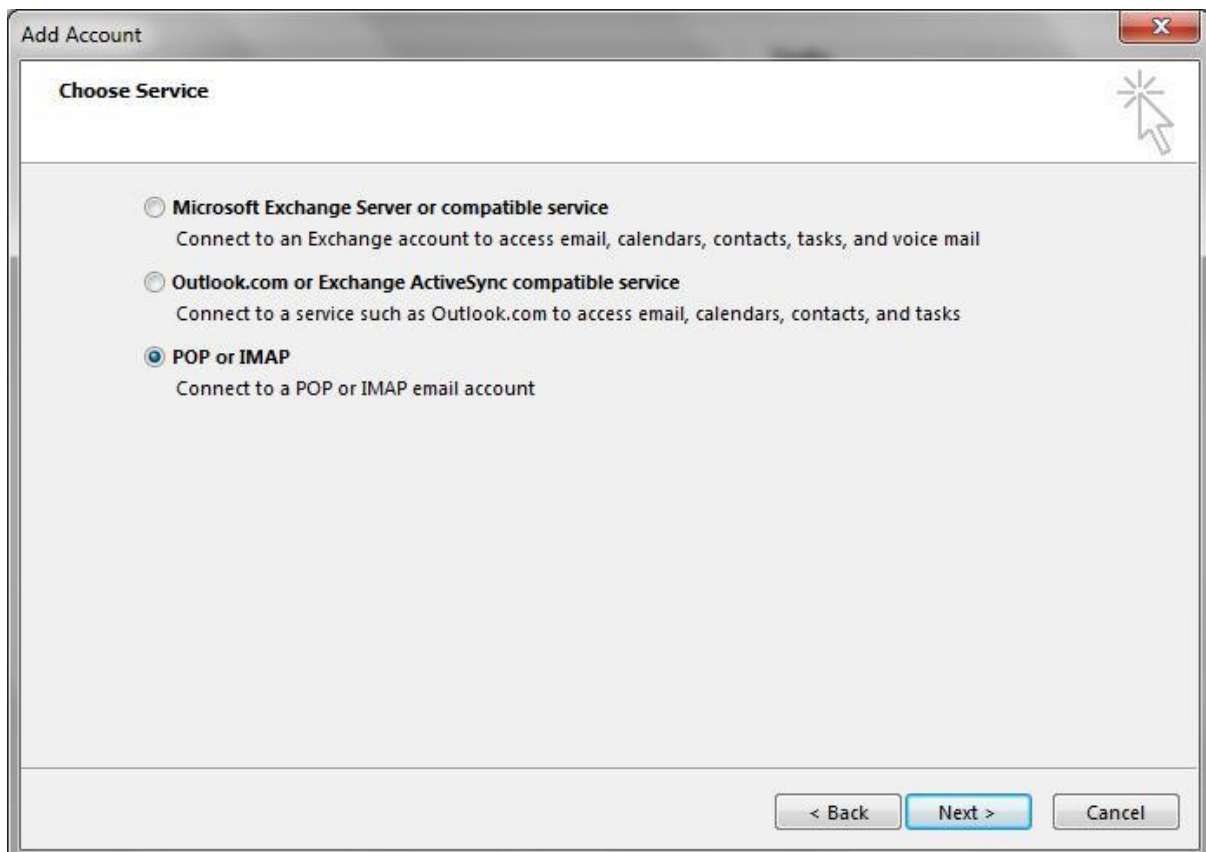
◆ Manual Account Setup

If you prefer to use POP, you will need to set up the account manually:

1. Launch **Outlook**, choose **File > Account Settings > Add Account** (as above)
2. Choose **Manual Setup or additional server types > Next**



3. Select **POP or IMAP > Next**



Account settings

4. Enter all the relevant details (POP or IMAP) and then select the **More Settings...** button.
- Outlook will **auto-fill your User Name** – please ensure you fill in your **entire email** address as *the username*
 - For new hosting accounts, use the IP address instead of the Incoming & Outgoing mail servers

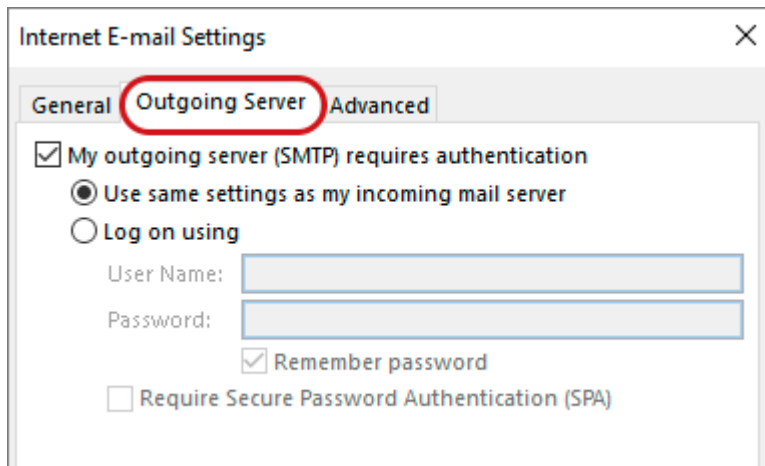
The screenshot shows the 'Add Account' dialog box in Outlook. The title bar reads 'Add Account'. The main heading is 'POP and IMAP Account Settings' with the instruction 'Enter the mail server settings for your account.' The dialog is divided into several sections:

- User Information:** 'Your Name' (Name Surname), 'Email Address' (name@example.com).
- Server Information:** 'Account Type' (POP3), 'Incoming mail server' (mail.example.com), 'Outgoing mail server (SMTP)' (smtp.example.com).
- Logon Information:** 'User Name' (name@example.com), 'Password' (*****), 'Remember password' (checked), 'Require logon using Secure Password Authentication (SPA)' (unchecked).
- Test Account Settings:** 'Test Account Settings ...' button, 'Automatically test account settings when Next is clicked' (checked).
- Deliver new messages to:** 'New Outlook Data File' (selected), 'Existing Outlook Data File' (with a 'Browse' button).

At the bottom right, the 'More Settings ...' button is circled in red. At the bottom of the dialog are '< Back', 'Next >', and 'Cancel' buttons.

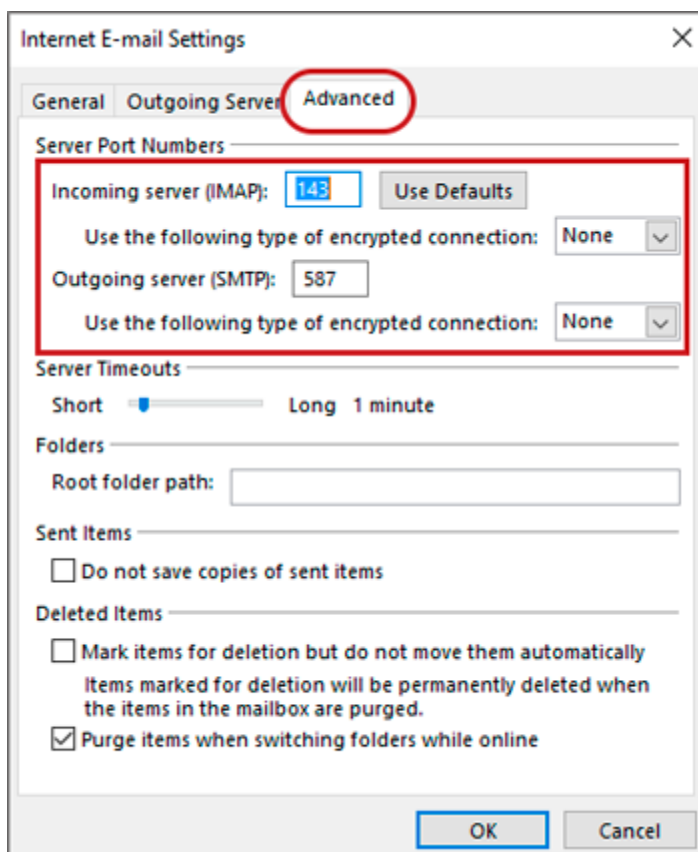
Check Outgoing Server settings

5. Select the **Outgoing Server** tab
- Ensure that the **My outgoing server (SMTP) requires authentication** checkbox is ticked
 - Ensure that you have selected **Use same settings as my incoming mail server**



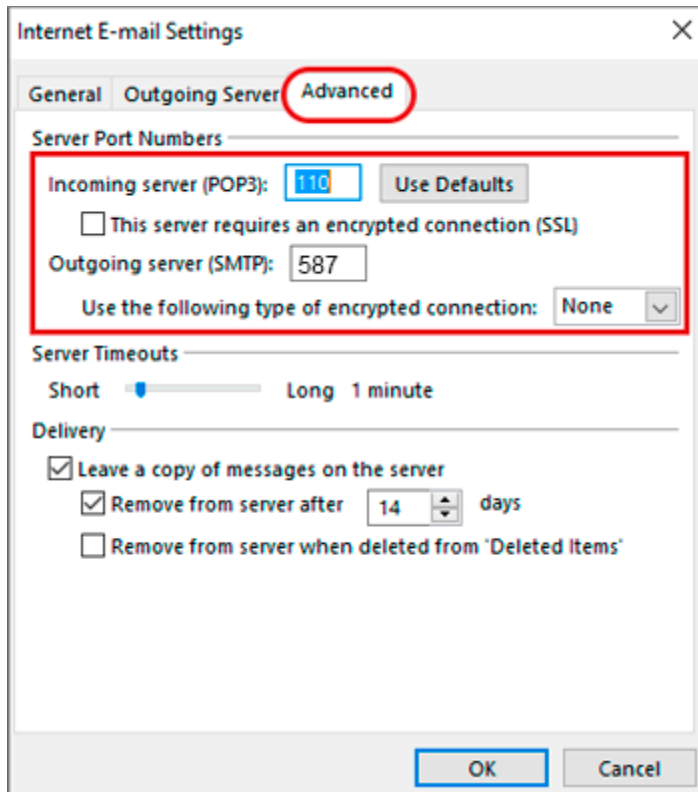
Check Advanced SMTP settings

6. Select the **Advanced** tab and ensure that your settings are as below for either IMAP or POP:IMAP port settings
 - Incoming **143**, outgoing **587**
 - **Not ticked:** This server requires an encrypted connection (SSL)
 - Use the following type of encrypted connection is *None*



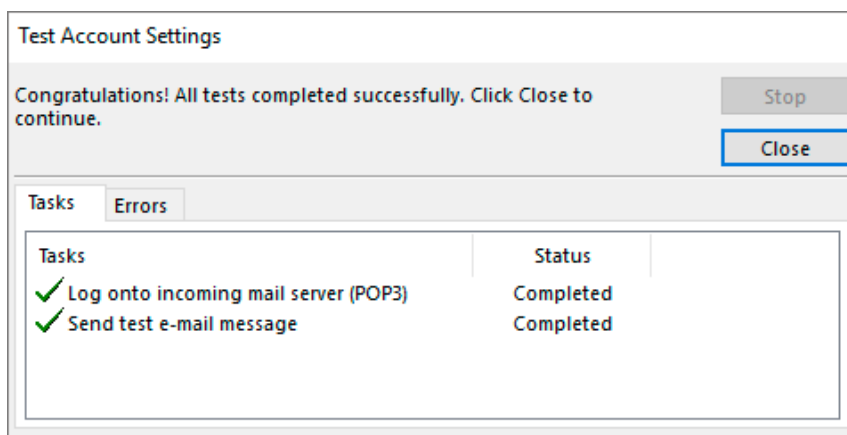
POP port settings

- Incoming **110**, outgoing **587**
- **Not ticked:** This server requires an encrypted connection (SSL)
- Use the following type of encrypted connection is **None**



7. Click **OK** and then **Next**.

8. Let the test complete and then click **Close**



You're all set! > **Finish**